

Setting up a HYPE model domain - a beginner's tutorial

Introduction

This tutorial provides introductory guidelines for creating a new HYPE model set-up in a new model domain. These guidelines cover the creation and formatting of mandatory and optional input files for a basic HYPE rainfall-runoff and nutrient turnover model. HYPE requires all input data as a set of formatted text files (e.g. model domain information, observation data, or calibration parameters). All input files mentioned in this tutorial are documented in detail in the [file reference section](#) of the HYPE documentation pages.

HYPE domains are spatially divided into sub-basins for which hydrological response units (HRUs) are derived. In order to create a HYPE model set-up, modellers will have to create a suitable sub-basin delineation based on a topographical database. SMHI provides the freeware GIS tool [WHIST](#) (World Hydrological Input Setup Tool) which is especially suited for setting up large HYPE domains using the [USGS's HYDROSheds Hydrologically conditioned elevation product](#), but users can choose any GIS software suitable to derive sub-basins and flow routing connections and build their HYPE set-up workflow around them. WHIST provides additional functionality, e.g. to calculate HRU fractions for each sub-basin, and a convenient file export in HYPE-conform formatting. Many example figures in the tutorial text below show WHIST screenshots.

The following links list further in-depth reading, complementary to this tutorial:

- The [Quick Guide](#) gives an introduction to mandatory files and important parameters of a basic HYPE set-up
- The [HYPE model description](#) documents all process conceptualisations used in HYPE
- The [HYPE file reference](#) provides a technical reference to all HYPE files, parameters and variables

HYPE software is available from the following sites:

- HYPE model code including precompiled windows executables and updated information on latest developments is hosted on the [HYPE Open Source Community Pages](#)
- The above mentioned GIS tool called WHIST including manual and tutorials is part of the [HYPE Tools](#)
- [HYPETOOLS](#) is an add-on package for the [R software environment](#) to pre- and post-process HYPE data and support analysis of model results in R. See installation instructions [here](#)

Creating sub-basins for HYPE

If sub-basins do not exist for the targeted model domain, or if the routing is not defined between them, this information has to be created for a HYPE model set-up.

SMHI has developed a software for this purpose called WHIST, see links above. The manual "Procedure for using WHIST" describes step by step how to create hydrologically connected subbasins

and how to extract information needed as input for the HYPE model. The software can also import already delineated subbasins from a shapefile with or without routing information.

The following sections outline the main steps which need to be taken to create a HYPE set-up in a new model domain.

Routing, lakes, soil and landuse

HYPE model domains are divided into spatially delineated sub-basins. A hydrologically corrected gridded topographic database is used to derive the model domain (i.e. all sub-basin areas). The procedure is controlled by the geographic location of gauging stations and their documented catchment area which should have been quality checked before the delineation of the subbasins since the outlet of the developed subbasins should be drawn to fit the position of the gauging stations to get the best simulation conditions and optimize the possibilities to calibrate the model, see Fig. 1 to Fig. 3. How big these adjustments are is dependent on the resolution of the elevation data.

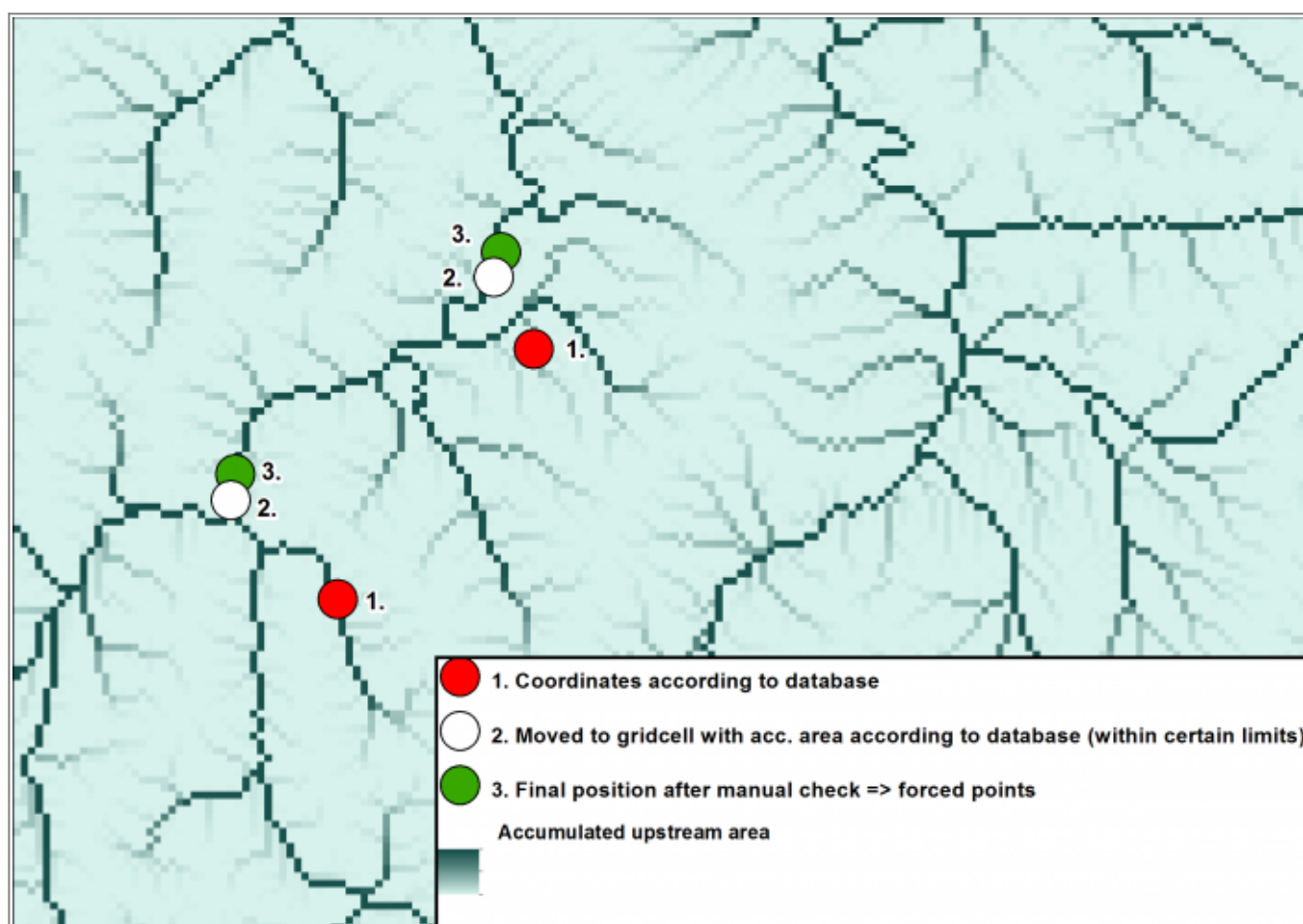


Figure 1: Adjustment of gauging stations according to published drainage area. The flow accumulation data from Hydrosheds shows here the river network.

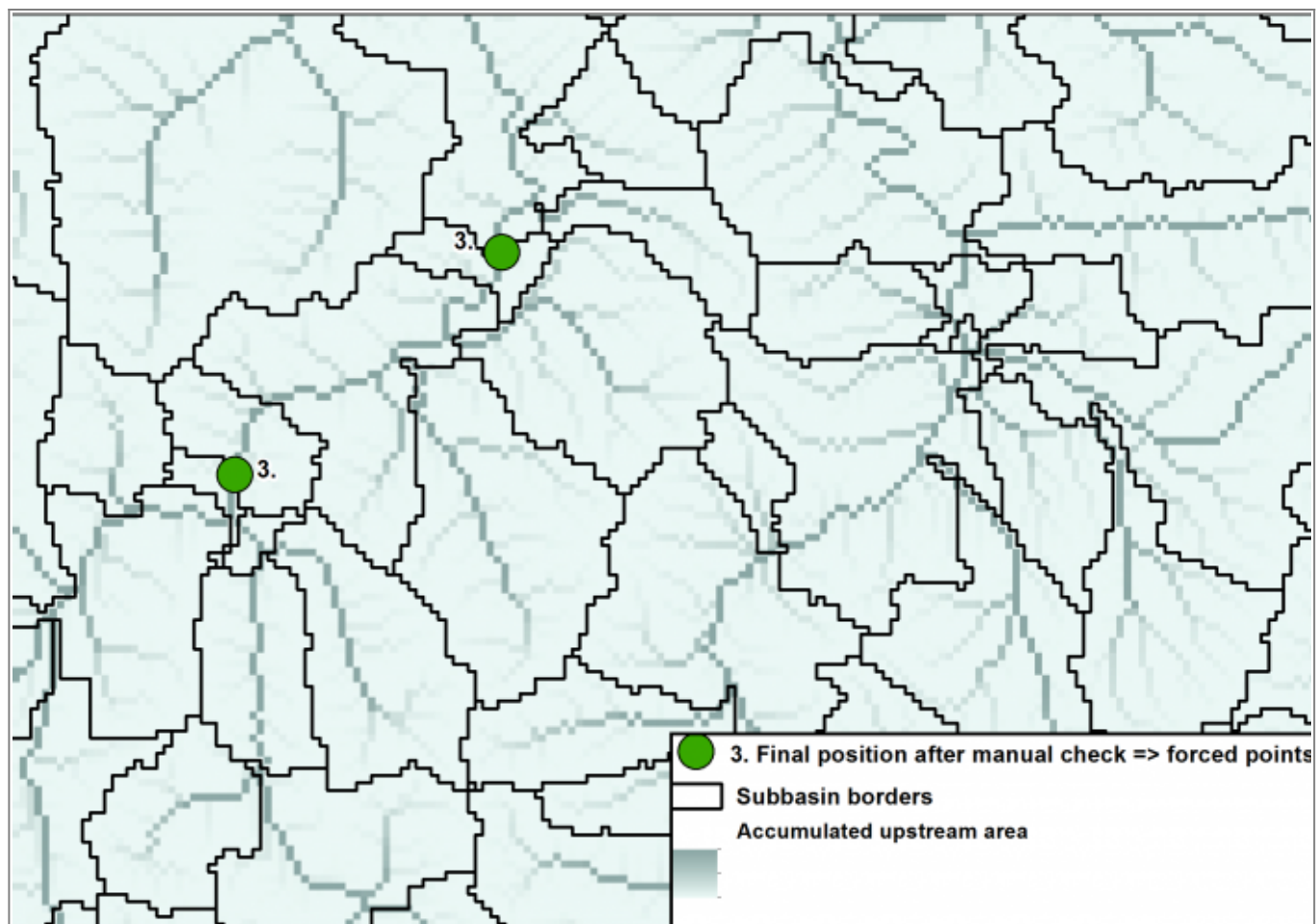


Figure 2: The subbasins have been calculated and drawn.

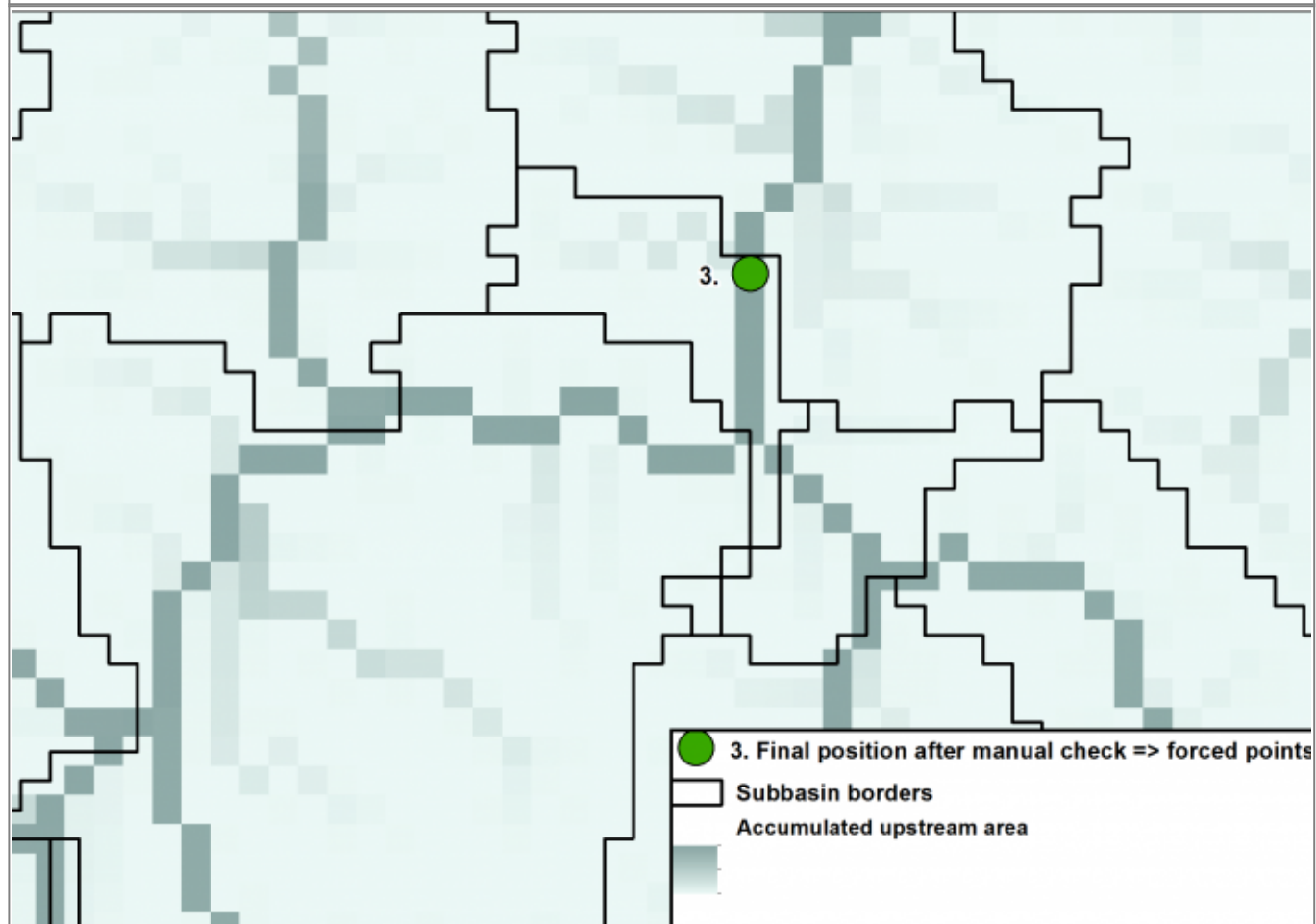


Figure 3: The subbasin border is drawn to fit the outlet to the gauging station.

Each subbasin must receive a unique subbasin ID (SUBID) and the SUBID of the subbasin next downstream to explain the routing, see figure 4. This is mandatory for the model and described in GeoData.txt (more info [here](#)).

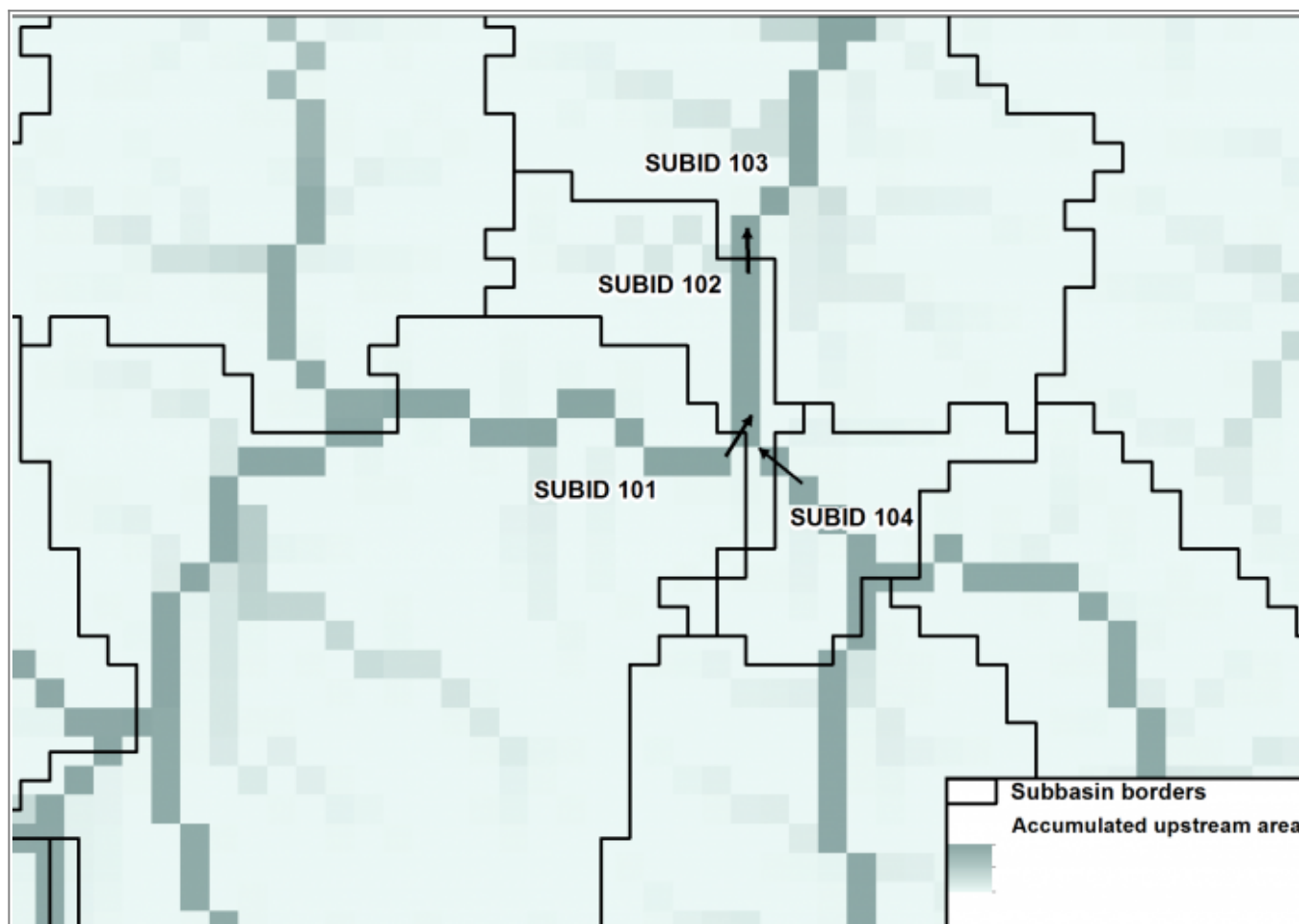


Figure 4: Routing between sub-basins. SUBID 103 is next downstream to SUBID 102. SUBID 102 is next downstream to SUBID 101 and 104.

To describe the landuse and soil properties for each subbasin in the model, these are combined into so called SLC (Soil and Landuse Classes) classes (for example forest + medium soils, open land + fine soils etc), see figure 5. The distribution of SLC classes for each subbasin is described in geodata.txt and the SLC classes are defined in GeoClass.txt (more info [here](#)).

Keep landuse and soil classes essential and typical for the model domain but merge classes into a number you will manage to calibrate.

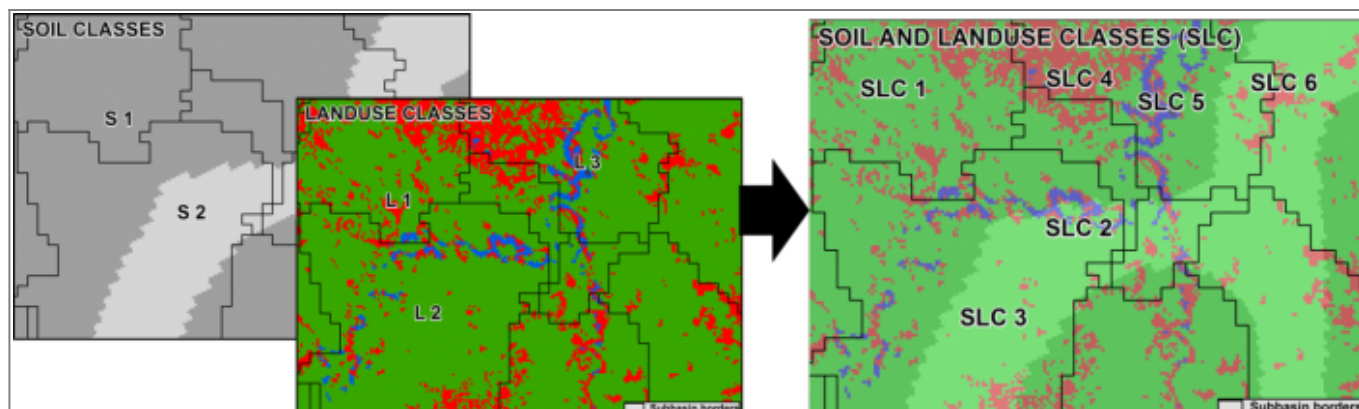


Figure 5: Soil and landuse information is combined into SLC classes. Each subbasin is described with the proportion of the different classes in GeoData.txt.

Lakes can be included to the model in two ways: as local lakes (ilakes) or as outlet lakes (olakes), see figure 6. The outlet lakes can be provided with rating curves and/or regulation schemes in LakeData.txt (more info [here](#)). The outlet lakes could be inserted as subbasins with their outlets corresponding to the subbasin outlet, see figure 7.

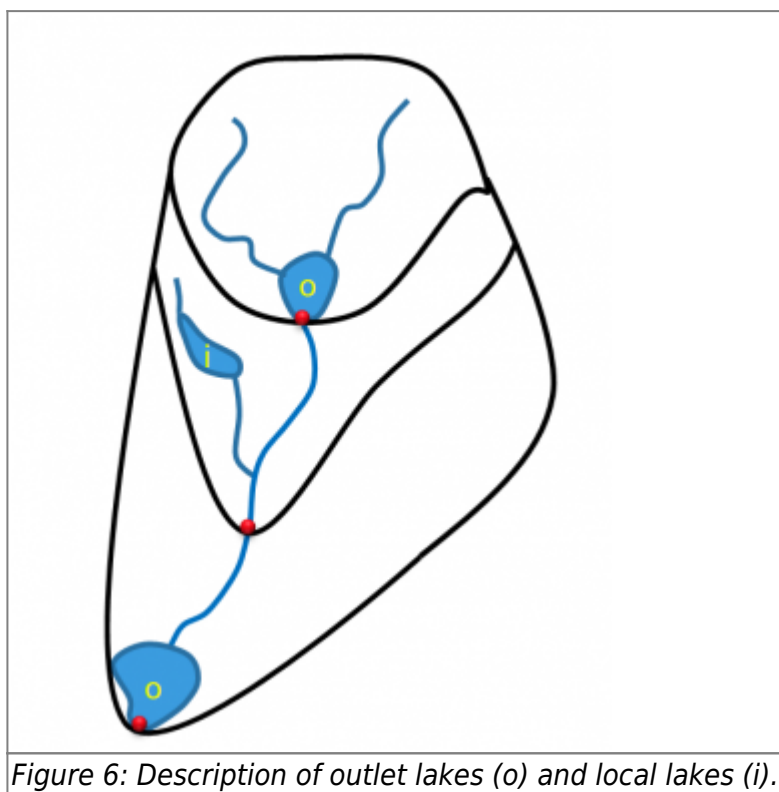


Figure 6: Description of outlet lakes (o) and local lakes (i).

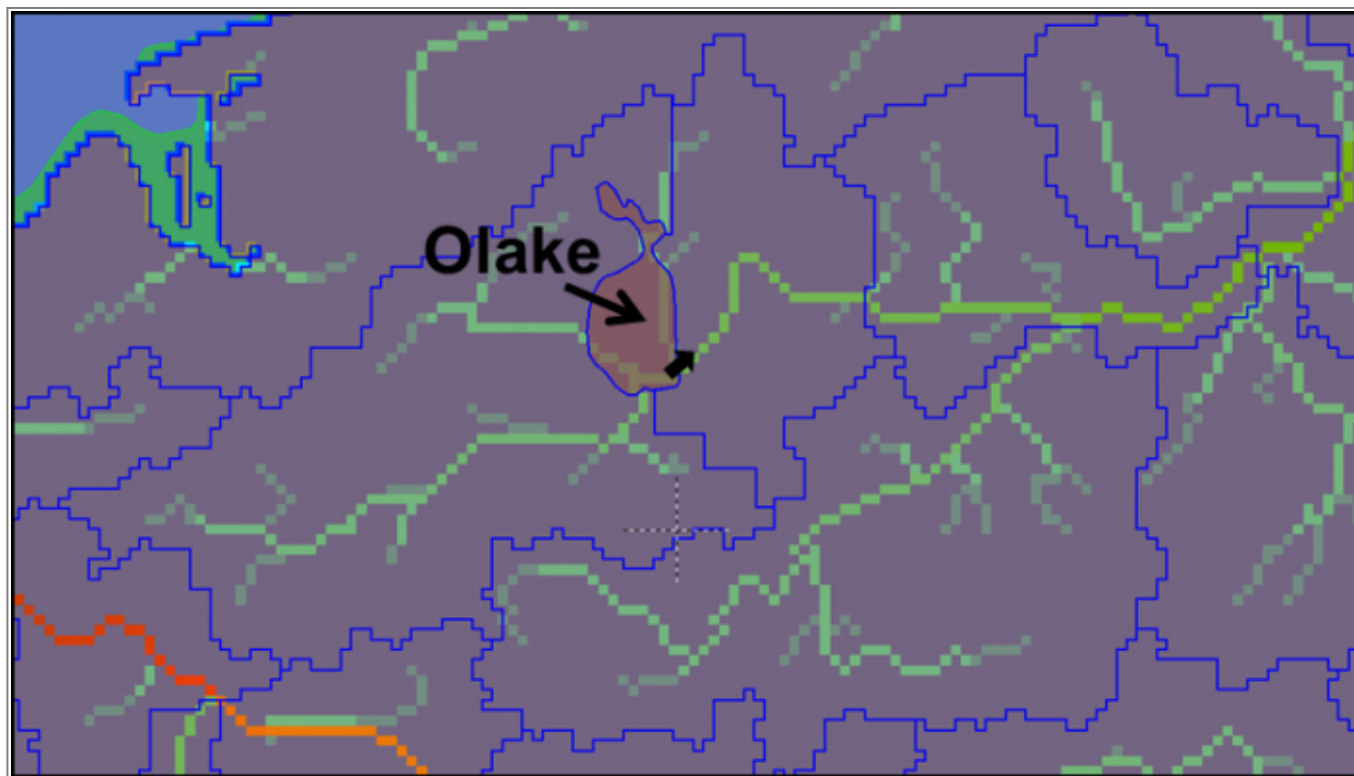


Figure 7: Sub-basins should be drawn with their outlets fitting to the olakes outlet. The olake could either be an individual subbasin or included to the upstream subbasin.

Climate Data

The model is forced by temperature ([Tobs.txt](#)) and precipitation ([Pobs.txt](#)) time series (mandatory) as a minimum. Temperature and precipitation can be corrected by elevation. The mean elevation of each sub-basin is included to the [GeoData.txt](#) file.

The separation of precipitation into rainfall and snow is usually done using air temperature threshold parameters, see [Processes above ground](#) in model description. However, it is also possible to force the model with a prescribed time series of snowfall fractions fraction in precipitation using the input-file [SFobs.txt](#).

The default snowmelt model uses only air temperature as input. As an alternative, a snowmelt model based on temperature and radiation can be used. In that case, shortwave radiation is either read from an input file [SWobs.txt](#) or estimated.

Read more about these processes [in the model description](#).

The model could use different types of PET (potential evaporation) models ([Alternative potential evaporation models](#)). The different options for calculation of potential evapotranspiration requires additional forcing data, e.g. potential evaporation, extra-terrestrial radiation, daily min and max air temperatures, shortwave radiation, relative humidity, wind speed.

The HYPE code is continuously under development and new opportunities to force the model may be developed in the future. See <http://hype.sourceforge.net/> for news.

Modelling water quality

There is an option to run water quality with HYPE. For modelling water quality, i.e. nitrogen and phosphorus leaching and transport, an additional file [CropData.txt](#) is required. CropData.txt consists of information on vegetation properties, e.g. average nutrient uptake, and crop management properties (e.g. fertilization amounts, sowing and harvesting days). Each line in CropData.txt holds information on a specific crop (or other vegetation) in a specific region (defined for each SUBID in [GeoData.txt](#)). Links between SLC and crops (main and secondary) are made in [GeoClass.txt](#).

In addition, a few extra columns may be required in GeoData.txt. These include:

- Atmospheric nitrogen deposition (dry and wet)
- Sewage not connected to municipality waste water treatment plans (septic tanks etc.)

[PointSourceData.txt](#) holds information on point sources of nitrogen and phosphorus and in which SUBID they are discharged. Abstractions, e.g. for municipality water supply, may also be handled in PointSourceData.txt.

These files are only necessary if nutrients are to be modelled.

Setting up mandatory input files for HYPE

All input files to HYPE are listed and described in detail in the [HYPE file reference](#) section of the online documentation.

Some of the setup and input data files described in this section of the tutorial are mandatory for every HYPE model setup: GeoClass.txt, GeoData.txt, Tobs.txt, Pobs.txt, info.txt, par.txt.

Error checking is very limited, so be careful to follow the described file formats.

Input data, GeoClass.txt

[GeoClass.txt](#) is a file that defines the properties of the Soil and Landuse Classes (SLC) in geodata. It also describes special classes (lakes and glaciers), the number and depths of the soil layers.

Figure 8 shows a typical GeoClass.txt file. The first three rows contain comments, here some class ID references for different columns. These rows are denoted with an exclamation mark "!". The column heads on row 4 are also just comments and not necessary for HYPE since the order of columns is predefined. The first column describes the SLC id. This id links geoclass to the SLC information in GeoData.txt. The second and third column describes the combination of landuse and soil in the SLC. Lakes (here: SLC 1 and 2) have 2 rows here. One for the special class 1 (outlet lake) and one for the special class 2 (internal lake). Glaciers also have a figure (3) in the special class column. All classes have got a figure for the vegetation type. This is only used for the NP simulations though. Crops have got a tile-depth in this example. It describe the distance from soil surface to the tile drainage system. Drain depth is the distance from soil surface to local stream depth. The last 4 columns describe the number of soil layers and the depth of these layers from soil surface to bottom of each soil layer.

!LANDUSE: 1=Water; 2=Glacier, snow; 3=Urban; 4=Wetland; 5=Crops; 6=Forest; 7=Open

!SOILS: 1=no texture; 2=Coarse; 3=Medium; 4=Fine; 5=Organic; 6=Shallow

!Special-class 1=olake, 2=ilake, 3=glaciär, 0=övriga

! SLC_x	Landuse	Soil	Cropid-main	Cropid-2nd	Rotation	Vegetation-type	Special-class	Tile-depth	Drain-depth	#Soil-layers	Depth1	Depth2	Depth3
1	1	1	0	0	0	3	1	0	1	1	10		
2	1	1	0	0	0	3	2	0	1	1	10		
3	2	1	0	0	0	1	3	0	0.75	3	0.25	0.5	1
4	3	1	0	0	0	1	0	0	0.75	3	0.25	0.5	1
5	4	2	0	0	0	1	0	0	2	3	0.25	1.25	3
6	4	5	0	0	0	1	0	0	2	3	0.25	1.25	3
7	5	3	0	0	0	1	0	0.75	2	3	0.25	1.75	3
8	5	4	0	0	0	1	0	0.75	2	3	0.25	1.25	3
9	6	2	0	0	0	2	0	0	2	3	0.25	1.25	3
10	6	3	0	0	0	2	0	0	0.75	3	0.25	0.5	1
11	6	5	0	0	0	2	0	0	2	3	0.25	1.25	3
12	7	3	0	0	0	1	0	0	2	3	0.25	1.25	3
13	7	6	0	0	0	1	0	0	0.75	3	0.25	0.5	1

Figure 8: Typical GeoClass.txt structure.

Input data, GeoData.txt

Geodata.txt holds information about the subbasins, i.e. routing, area, mean elevation, fraction of SLCs, parameter regions, general lake depths etc. See [GeoData.txt](#) for a comprehensive reference on GeoData.txt columns.

The structure of a GeoData.txt files is shown in Fig. 9. The first column holds the ROWNR to keep the order of the rows since the subbasins have to be ordered in a downstream sequence starting at headwaters and ending at outlet basins. The columns SUBID and MAINDOWN (0=outlet to the sea) hold the routing information (see green cells). The columns may be in any order. The mandatory columns for simulating water are: SUBID, MAINDOWN, AREA, ICATCH, RIVLEN and SLC_nn, but it is also recommended to use LAKE_DEPTH and ELEV_MEAN. If you use a [LakeData.txt](#) file for tailored data on lake properties, you need to link to this file in the column named LAKEDATAID (see blue cell). The parameter regions (which can be used in par.txt to correct some parameters according to regions) are described in PARREG column. The sum of the SLCs should always be =1. See the [GeoData.txt](#) for more information about the geodata columns.

ROWNR	SUBID	HAROID	MAINDOWN	AREA	UPAREA	RIVLEN	PARREG	LAKEDATAID	LAKEREGION	LAKE_DEPTH	ICATCH	ELEV_MEAN	SLC_1	SLC_2
1	1087920	1087920	0	688000384	0	26230	1	0	1	15	0.3	967.4	0	0.00155
2	1052722	1052722	0	165000000	0	12845	2	0	1	15	0.3	5.3	0	0.01486
3	1118723	1118723	0	86000000	0	9274	1	0	1	15	0.3	35.9	0	0.01744
4	1092641	1092324	1093143	2529000704	0	50289	3	0	1	15	0.3	292.1	0	0.03925
5	1092902	1092324	1093143	1674999040	0	40927	3	0	1	15	0.3	260.2	0	0.02447
6	1092995	1092324	1092324	2071000064	0	45508	3	0	1	15	0.3	378.3	0	0.01654
7	1093143	1092641	1092324	484000000	4203999744	22000	3	0	1	15	0.3	112.3	0	0.15835
8	1092324	1092641	0	184000000	6759000064	13565	3	0	1	15	0.3	120.1	0	0.01955
9	4000209	1002212	1002212	307263936	0	17529	1	0	1	15	0.3	3.7	0	0.18343
10	1002212	1002212	0	107444184	307263936	10366	1	1705	1	15	0.3	0.1	0.999589	0

Figure 9: An example of GeoData.txt file structure.

It is necessary that the subbasins are ordered in a downstream sequence. [RHYPE](#) includes a function `SortGeoData()` for this purpose.

When GeoData.txt has been constructed it is always a good idea to check the tailoring of the data. Join the geodata.txt to the subbasin shapefile and produce some maps for spatial check, i.e. ELEV_MEAN, summerized LandUse and Soilclasses. A function `GroupSLCClasses()` from [RHYPE](#) can be helpful. To check the routing you can map each sub-basin's catchment area (from WHIST: AREA+UPAREA, from [RHYPE](#): `SumUpstreamArea()`) and get a view of the network.

Input data, P(obs), T(obs), ForcKey

Precipitation (mm/time step) and temperature time series (°C/time step) are needed to force the model. [Pobs.txt](#) and [Tobs.txt](#) files are therefore mandatory. If you use complementary data needed for other PET/snowfall/snowmelt models other than standard, these options can be chosen in [info.txt](#), see [model options](#).

Suggested procedure

Choose source database. Take into account accuracy, resolution, and also final use of model, i.e. operational forecasting, climate modelling, local studies, etc. These all should affect the choice.

Create links from SUBID in HYPE to grid square in input data set using WHIST or another GIS software or method. Depending on grid and sub-basin sizes, area-weighted averaging of gridded forcing data might be prudent.

Create Pobs.txt and Tobs.txt files. The forcing data can either have each SUBID as column header or an independent PobsID/TobsID, e.g. the original forcing data ID. If PobsID and TobsID are used, the link between these and the SUBIDs is described in [ForcKey.txt](#).

The structure of forcing data files is illustrated in Fig. 10 and Fig. 11.

DATE	197123	197124	197125	197126	197127
19790401	0	0	0.1	0.18	0.23
19790402	0	0	0	0	0
19790403	0	0	0	0	0
19790404	0	0	0	0	0
19790405	0.39	0	0	0	0
19790406	0.4	0.67	0.72	0.76	0.91
19790407	0	0.11	0.3	0.44	0.5
19790408	0	0	0	0	0
19790409	0	0.11	0	0.21	0.25
19790410	2.31	2.02	1.96	1.74	1.72
19790411	1.61	2.33	2.59	2.84	3.28
19790412	0	0	0.11	0.26	0.32

Figure 10: Part of Pobs.txt. First column is used for dates, following columns for observed data. Column headers are either SUBID (if you have a unique observation for each SUBID) or POBSID (if you use ForcKey.txt and several SUBIDs use the same time series).

DATE	197123	197124	197125	197126
19800501	2.79	6.2	7.38	8.82
19800502	-5.25	-1.99	-0.8	0.5
19800503	-6.92	-4.06	-3.44	-2.45
19800504	-3.64	-1.33	-1.15	-0.47
19800505	1.81	4.93	5.69	6.81
19800506	-2.18	0.21	0.3	0.91
19800507	2.53	5.25	5.89	6.84
19800508	2.4	6.01	7.2	8.79
19800509	6.24	9.31	10.3	11.79

Figure 11: Part of Tobs.txt. First column is used for dates, following columns for observed data. Column headers are either SUBID (if you have a unique observation for each SUBID) or TOBSID (if you use ForcKey.txt and several SUBIDs use the same time series).

Make sure there is an elevation correction in par.txt for temperature and precipitation if necessary (will depend on your input data sets, resolution, geography etc).

Suggestions for quality assurance of forcing data:

- Plot P and T output from HYPE, mapPrec, mapTemp (i.e. 30 year means, you should even check Summer and Winter means) to check if the SUBID id links are correct. Compare to published maps of P and T to check if reasonable.
- Correct precipitation: Make a run of HYPE where $cevp = 0$ i.e. evapotranspiration = 0, Plot the volume error at each station on a map. Look for stations where precipitation is insufficient (ie. Volume error (RE) $\neq 0$). Look for correlation of RE with elevation (to make a precipitation correction, pcorr, based on elevation) or with region (to use a regional pcorr)
- Further checks you can do: include seasonal variation of P and T, extremes, etc.

ForcKey

ForcKey.txt is a key file for linking forcing data ID to SUBID. This file is not necessary if SUBIDs are used in Pobs.txt and Tobs.txt. If ForcKey.txt is used, this has to be stated in the info.txt with `readobsid = y`.

The structure of a typical ForcKey.txt file can be seen in Fig. 12.

SUBID	TOBSELEV	TOBSID	POBSID
3000010	1232	197851	197851
3000027	510	207927	207927
3000028	510	207927	207927
3000032	510	207927	207927
3000034	1465	197131	197131
3000035	628	205052	205052
3000040	542	205775	205775

This file contains all model settings for a model run and this provides the main user interface. Here, the modeller can define e.g. simulation start and end dates along with spin-up periods, which output files to print and which performance statistics to calculate. Users can also choose different options for model components, e.g. for evaporation and snowmelt modules. All settings are entered as code-value pairs in info.txt.

For different type of output files see the [file reference entries for output files](#). For different types of output variables see the [file reference entries for output variables](#).

!! Calculation settings:					
bdate	1979-01-01				
cdate	1980-01-01				
edate	2010-12-31				
resultdir	D:\simulation\				
readdaily	y				
readobsid	y				
petmodel	1				
!! RASIN output selection:					
!! meanperiod 1=daymean, 2=weekmean, 3=monthmean, 4=yearmean, 5=total period mean					
basinoutput subbasin	1020431				
basinoutput variable	cout rout ctmp qprc				
basinoutput meanperiod	1				
basinoutput decimals	3				
!! TIME output selection (results from all subbasins in same file, one for each timeoutput variable, one subbasin per column)					
timeoutput variable	cout crun ctmp qprc				
timeoutput decimals	3				
timeoutput meanperiod	3				
!! MAP output selection (results from all subbasins in same file,one for each mapoutput variable, one subbasin per row = suitable for GIS-mapping)					
mapoutput variable	cout crun ctmp qprc				
mapoutput meanperiod	5				
mapoutput decimals	3				
!! Select criteria for model evaluation:					
crit meanperiod	1				
crit 1 data limit	3				
crit 1 criterion	MKG				
crit 1 variable	cout				
crit 1 rvariable	rout				
crit 1 weight	1				

Figure 13 (click to enlarge): info.txt example structure. Marked in red are codes to set model options, which are typically followed by codes describing output options (marked in green), and codes describing performance criteria options.

The parameter file, par.txt, hold model parameters some of which can be calibrated. Some parameters are general, some landuse dependent, some soil dependent. There are also some

parameters that can be tailored to certain given regions. See further information in the [file reference entry for par.txt](#). There are also some suggestions on start values in the [Quick Guide tutorial](#).

A simple example of the structure of the par.txt is described in Fig. 14. Parameters are soil-, landuse- or region-dependent. There are also general parameters used for the total model domain. Parameters dependent on soil and landuse classes have to be ordered in the same way as in the GeoClass.txt file. Region-dependent parameters are parameters which collectively alter groups of parameters and allow for regional tuning (super-parameters). Parameter regions for these have to be defined in GeoData.txt in a column named PARREG.

!! Parameter file for New model			
!! Soil type dependent parameters			
!! SOIL—!!	COARSE	MEDIUM	SHALLOW
rms1	0.1	0.2	0.6
rms2	0.02	0.004	0.3
trms	0.15	0.15	0.15
mperc1	25	20	100
mperc2	25	20	100
sfrost	1	1	1
macrate	0.3	0.3	0.3
mactrinf	50	10	10
mactrsm	0.8	0.8	0.8
srrate	0.01	0.05	0.01
wcwp	0.05	0.3	0.5
wfc	0.15	0.2	0.08
wcep	0.07	0.06	0.03
!!			
!! Landuse dependent parameters			
!! LANDUSE —!!	FOREST	CROP	OPEN
cmilt	2.2	2.6	2.2
ttmp	1.1	0	2
cevp	0.21	0.21	0.21
frost	2	2	2
srms	0.3	0.21	0.22
cmrad	0.5	0.5	0.5
!!			
!! "Superparameters" - correction factors for certain parameters			
!! for regions defined in geodata.txt (PARREG)			
!! Parameterregion	1	2	3
cevpcorr	-0.1	0.1	0
preccorr	0.1	0	-0.05
!!			
!! General parameters			
toobselev	0.6		
ttpd	1		
ttpi	1		
lp	1		
damp	1		
rivvel	1		
tcalt	0.6		
rogrw	0		
epotdist	3.5		
gldepi	5		
gratp	2		
gratk	3		
limoproduct	0.25		
toelevadd	0		
pcelevadd	0.02		
pcelevth	400		
pcelevmax	1		

Figure 14: A basic example of par.txt. One row per parameter. Comment rows can be inserted using '!!'.

Setting up optional input files for HYPE

There are many optional components in HYPE. Below we describe some of the most commonly used optional model components, lakes and reservoirs and bifurcations, which often have large impact on the hydrology in large-scale river basins. Others can be found among the tutorials (e.g. [floodplains](#)).

Information about outlet lakes (LakeData.txt)

[LakeData.txt](#) is used to tailor rating curves and/or general regulation routines to the olakes. For use of LakeData.txt you need more specific information about lake depths, regulation volumes etc. For larger lakes and reservoirs around the world these can for example be found in the [GLWD](#) (Global Lake and Wetland Database) and [Grand](#) (Global Reservoir and Dam database) databases.

Suggested procedure

- Link the outlet lakes to the SUBID's of your model.
- Complete LakeData.txt, see Fig. 15, with lake depths, outlet curves, regulation volumes, regulation routines, etc. where available. Use default depth for lakes where data is not available. A lot of information can be found on internet.
- GeoData.txt must have a link to LakeData.txt. The column lakadataid is used in both GeoData.txt and LakeData.txt for this purpose.
- Calibrate outlet curves and regulation routines for lakes with gauging stations near the outlet (i.e. run HYPE)
- General rating curves or regulation routines may be possible to use for different regions or reservoirs for different purposes if no discharge data or water level data is available.

SUBID
where
lake is
located

LAKEDATAID
links geodata.txt to
Lakedata.txt

LDTYPE = 1 for lakes not divided into several
subbasins, 2= multi-basin lake covering several
subbasins, 3=upstream lake basin of a multibasin
lake, 4=last lake basin of a multi-basin lake. See
the blue rows for an example.

LAKEID, used to connect lake
basins to multi-basins lakes. The
blue rows have the same LAKEID
since they are connected to the
same multi-basin.

Area of lake.
Mandatory for
LDTYPE=2.

SUBID	LAKEDATAID	NAME	TYPE	LDTYPE	LAKEID	AREA	REGVOL	LAKE_DEPTH	WOREF	RATE	EXP	QPROD1	QPROD2	UMQPROD	DATUM1	DATUM2	QAMP	QPHA	REGAMP
1001	1	Name1	Lake	1	10	2010000321	0	140	3827	100	2.5	0	0	0	0	0	0	0	0
1008	2	Name2	Lake	1	11	4325000152	0	13	31	44	1.8	0	0	0	0	0	0	0	0
2020	3	Name3	Lake	1	12	6335000473	0	4	10	32	1.1	0	0	0	0	0	0	0	0
1243	4	Name4	Lake	1	13	14094359049	0	150	225	100	2.5	0	0	0	0	0	0	0	0
-9999	0	Name5	Lake	2	14	1090300000	0	13	0.28	1060	0.65	0	0	0	0	0	0	0	0
2074	5	Name5a	Part of Lake	4	14	1090300000	0	13	0	1100	0.6	0	0	0	0	0	0	0	0
2073	6	Name5b	Part of Lake	3	14	1089000000	0	7.4	0	40.53	2	0	0	0	0	0	0	0	0
207	7	Name6	Reservoir	1	15	2656000000	456	48.7	5	724	1.5	32	140	0.7	501	1201	0	0	1.8
1003	8	Name7	Reservoir	1	16	1054954856	421	45	115	100	1.3	17	3	0.06	502	901	0	0	0

REGVOL regulation volume
for general regulation routine
used for reservoirs. Must be
less than lakedept* lake
area.

LAKE_DEPTH =
mean depth and
can also be defined
in geodata.

WOREF =
reference water
level to be added
to simulated
water level
before print out

RATE and EXP =
parameters for specific
rating curve or for
spillway flow of regulated
olakes above threshold.

Parameters for regulated olakes, see more
information in Lakedata.txt
http://www.smhi.net/hype/wiki/doku.php?id=start_hype_file_reference:lakedata.txt

Figure 15 (click to enlarge): Example of LakeData.txt. The LakeDataID is the link between GeoData.txt and LakeData.txt files. If a SUBID has a LakeDataID in GeoData.txt, the olake in this SUBID will be calculated according to the information in LakeData.txt. Black rows show some typical lakes, blue rows shows an example how to set up a multi-basin lake. The first blue row (bold) summerizes all basins. The red rows show some typical reservoirs. See more information about this file in [LakeData.txt](#).

Bifurcations (BranchData.txt)

With this file it is possible to describe bifurcations and other water diversions in downstream direction. Read more about this file at [BranchData.txt](#). Fig. 16 provides an example of a BranchData.txt file.

NAME	SOURCEID	BRANCHID	MAINPART	MAXQMAIN	MINQMAIN	MAXQBRANCH
Bifurcation1	1000166	4001261	0.9	5000	350	1
Bifurcation2	1001972	85942	0.5	0	0	500

Figure 16: BranchData.txt example. Sourceid is the SUBID with the bifurcation. Branchid is the SUBID of the receiving flow and this must be located in a row below the subbasin with bifurcation in GeoData.txt. Mainpart is the fraction of flow which flows in the main branch (not to branchid). Maxqmain/Minqmain is maximum/minimum flow in the main path and Maxqbranch is the maximum flow in the branch

Setting up observation data files

For calibration and validation of the model, observed time series of discharge data are compiled in a file [Qobs.txt](#). Other types of observations, e.g. nutrient concentrations or lake water levels are compiled in a file [Xobs.txt](#).

Observed discharge (Qobs.txt)

Qobs.txt contains observations of discharge in m³/s for each time step. An example of Qobs.txt is given in Fig. 17.

DATE	1000013	1000018	1000158	1000359
1961-01-01	463	1440	9.64	39
1961-01-02	486	1480	9.54	38.6
1961-01-03	487	1490	9.53	38.7
1961-01-04	480	1450	9.75	-9999
1961-01-05	478	1440	10.1	-9999
1961-01-06	471	1460	10.3	-9999
1961-01-07	468	1500	10.7	-9999
1961-01-08	469	1490	10.8	-9999

Figure 17: Example of Qobs.txt . First column is used for the date of observation. Then each column have the SUBID the data is given for as header. Missing values should be given as -9999.

Suggestions for quality assurance in discharge observations:

- Compare the modelled upstream area of the SUBID and the gauging stations metadata. Correct and adjust routing or position of station if necessary. Decide how large discrepancies to accept. (This was probably already done if forced points have been used during the routing and delineation of subbasins in [WHIST](#)).
- Analyse the time series. Is the time period of interest represented? Are there lot of missing data? Is the gauging stations situated in an area with severe regulations?

Observation data other than discharge (Xobs.txt)

The Xobs.txt file can contain observations of several selected variables, see more information in the [file reference entry for Xobs.txt](#). An example of an Xobs.txt file is shown in Fig. 18.

!! ET and PET				
x	eobs	eobs	repo	repo
0	10	241	3803	3804
2000-01-01	2.7	0.097	8.29	8.23
2000-01-02	2.7	0.097	8.29	8.23
2000-01-03	2.7	0.097	8.29	8.23
2000-01-04	2.7	0.097	8.29	8.23
2000-01-05	2.7	0.097	8.29	8.23
2000-01-06	2.7	0.097	8.29	8.23
2000-01-07	2.7	0.097	8.29	8.23

Figure 18: An example of an Xobs.txt file with observed evapotranspiration and potential evaporation in mm/timestep.

Perform a run

A HYPE model run is started by placing the HYPE executable file in the model folder and run it. Please read the information in the [Quick Guide](#) for details.

HYPE returns with a Code 84 message after a successful run. In Fig. 19 you can see an example of a HYPE model set up.

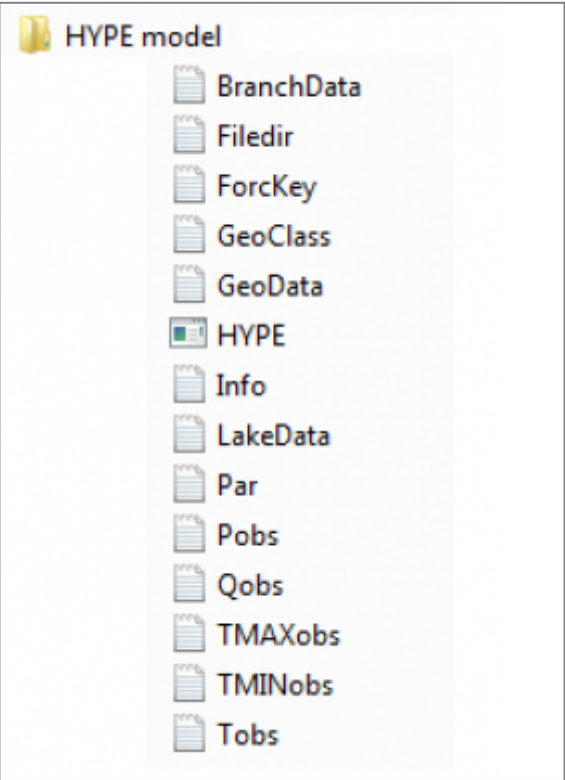


Figure 19: Example of HYPE model set up.

Model initialisation

It is possible to save model states for model initialisation, e.g. to save computation time on spin-up periods or to provide comparable starting states in scenario analyses. Read more about this in the [file reference entry for State_Save files](#).

Output files

HYPE provides three standard output file types for simulated data, one centered around single sub-basins, and two more centered around single output variables. There are further output files for water balances and model evaluation results. These are documented in detail in the [Output Files section of the HYPE file reference](#).

Calibration

Read more about the calibration options in the [HYPE file reference section for calibration files](#).